

SERVICE AREA MAP

(Attach a copy of the Service Area Map, approximately 7 x 8-3/4 inches in size, or folded to that size with not more than one fold so that it will fit within the borders of the space provided herein.)

The map should clearly indicate the boundaries of the service area, the principal streets and other main identifying features therein, and an indication of the general location of the service area in relation to nearby cities, highways or other well-known reference points.)

(TO BE INSERTED BY UTILITY)

ISSUED BY

(TO BE INSERTED BY C.P.U.C.)

VICE LETTER NO. 1

D. P. STEPHENSON

DATE FILED MAY 13 2003

NAME

EFFECTIVE JUN 12 2003

DECISION NO. 03-02-044

DIRECTOR - RATES & REVENUES

RESOLUTION NO. _____

TITLE

MONTEREY DIVISION
SEWER TERRITORY INDEX MAP
SERVICE AREA ADDITIONS

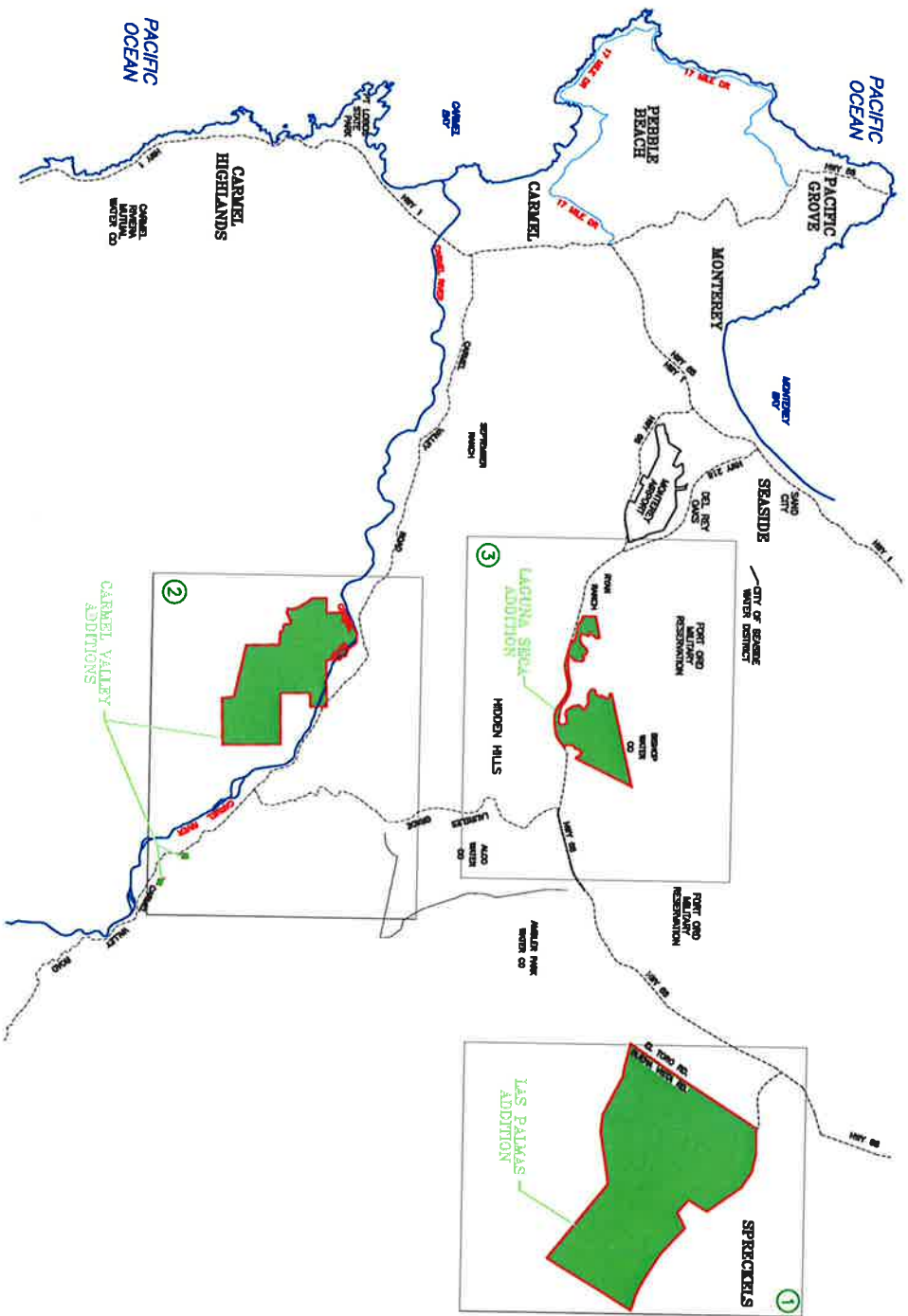


- EXISTING SEWER TERRITORY
- ADDITION TO SEWER TERRITORY
- DELETION FROM SEWER TERRITORY
- DETAILED SERVICE AREA MAPS 1
- SERVICE AREA BOUNDARY



NOT TO SCALE

Revised: 4-30-02



CALIFORNIA-AMERICAN WATER COMPANY
303 H STREET, SUITE 250
SANTA MONICA VISTA, CALIFORNIA 91910

Original C.P.U.C. SHEET NO. 8-S
C.P.U.C. SHEET NO. _____

SERVICE AREA MAP
Carmel Valley

(Attach a copy of the Service Area Map, approximately 7 x 8-3/4 inches in size, or folded to that size with not more than one fold so that it will fit within the borders of the space provided herein.)

The map should clearly indicate the boundaries of the service area, the principal streets and other main identifying features therein, and an indication of the general location of the service area in relation to nearby cities, highways or other well-known reference points.)

(TO BE INSERTED BY UTILITY)

ADVICE LETTER NO. 1

DECISION NO. 03-02-044

ISSUED BY

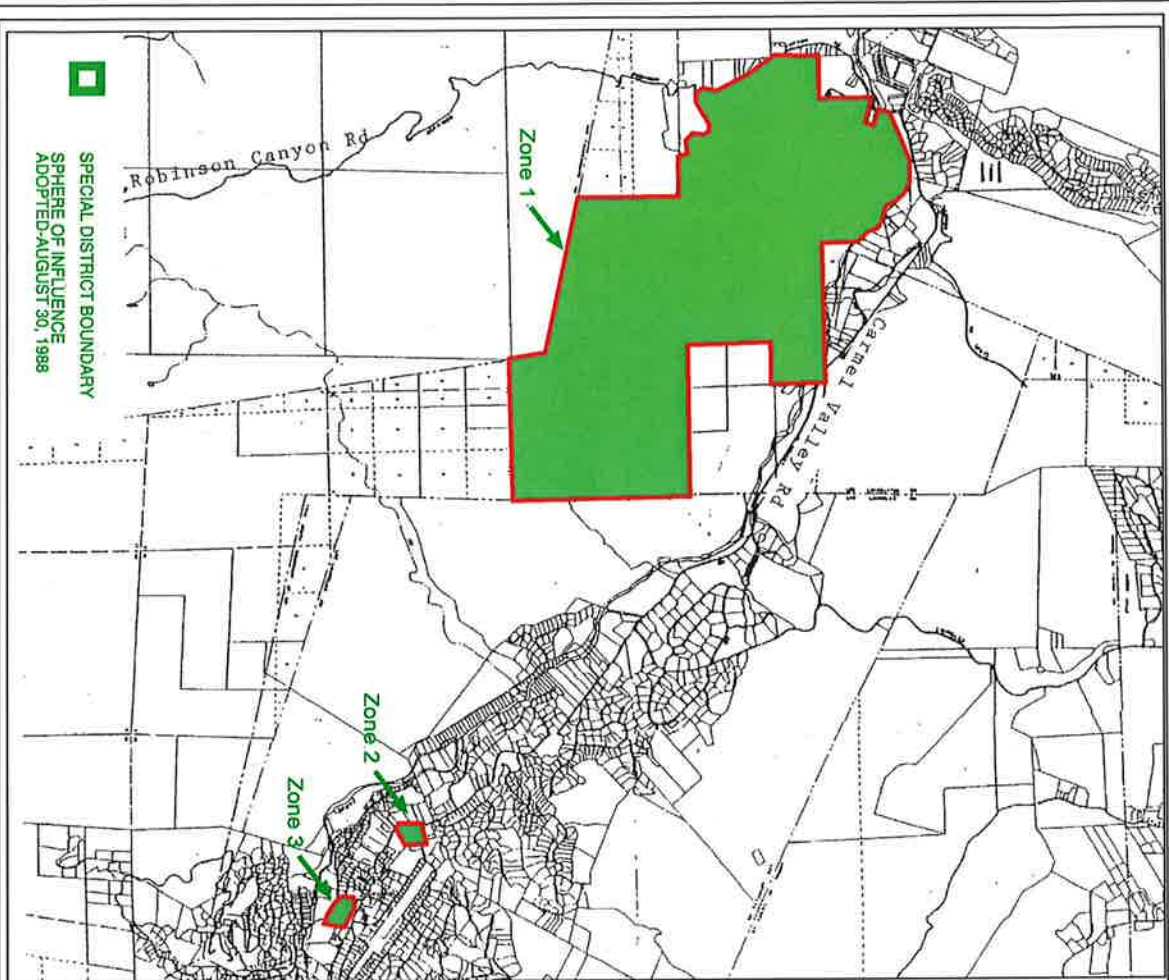
D. P. STEPHENSON
NAME

DIRECTOR - RATES & REVENUES
TITLE

(TO BE INSERTED BY C.P.U.C.)

DATE FILED MAY 13 2003
EFFECTIVE JUN 12 2003

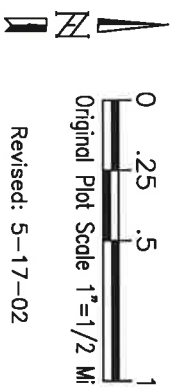
RESOLUTION NO. _____



MONTEREY DIVISION
SEWER TERRITORY
DETAIL MAP 2
CARMEL VALLEY



- EXISTING SEWER TERRITORY
- ADDITION TO SEWER TERRITORY
- DELETION FROM SEWER TERRITORY
- SERVICE AREA BOUNDARY



CALIFORNIA-AMERICAN WATER COMPANY
303 H STREET, SUITE 250
CHULA VISTA, CALIFORNIA 91910

Original C.P.U.C. SHEET NO. 57-S
C.P.U.C. SHEET NO. _____

SERVICE AREA MAP
Carmel Valley Zone 1

(Attach a copy of the Service Area Map, approximately 7 x 8-3/4 inches in size, or folded to that size with not more than one fold so that it will fit within the borders of the space provided herein.)

The map should clearly indicate the boundaries of the service area, the principal streets and other main identifying features therein, and an indication of the general location of the service area in relation to nearby cities, highways or other well-known reference points.)

(TO BE INSERTED BY UTILITY)

ADVICE LETTER NO. 1

DECISION NO. 03-02-044

ISSUED BY

D. P. STEPHENSON

NAME

DIRECTOR - RATES & REVENUES

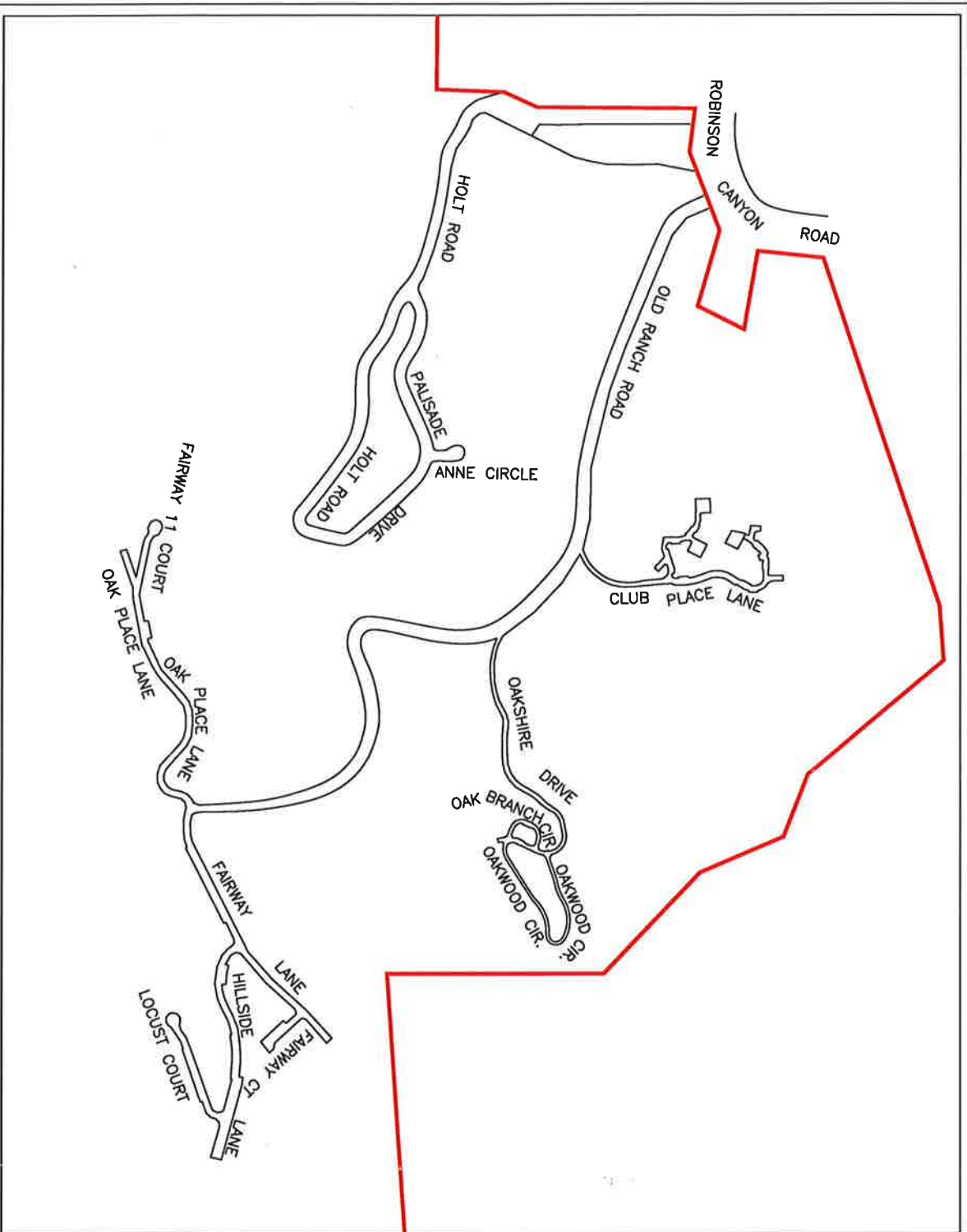
TITLE

(TO BE INSERTED BY C.P.U.C.)

DATE FILED MAY 13 2003

EFFECTIVE JUN 12 2003

RESOLUTION NO. _____



MONTEREY DIVISION
SEWER TERRITORY
STREET DETAIL MAP
ZONE 1
CARMEL VALLEY



- EXISTING SEWER TERRITORY
- ADDITION TO SEWER TERRITORY
- DELETION FROM SEWER TERRITORY
- SERVICE AREA BOUNDARY



Revised: 6-04-03

CALIFORNIA-AMERICAN WATER COMPANY

303 H STREET, SUITE 250

LA VISTA, CALIFORNIA 91910

Original

C.P.U.C. SHEET NO.

58-S

C.P.U.C. SHEET NO.

SERVICE AREA MAP

Carmel Valley Zones 2 and 3

(Attach a copy of the Service Area Map, approximately 7 x 8-3/4 inches in size, or folded to that size with not more than one fold so that it will fit within the borders of the space provided herein.)

The map should clearly indicate the boundaries of the service area, the principal streets and other main identifying features therein, and an indication of the general location of the service area in relation to nearby cities, highways or other well-known reference points.)

(TO BE INSERTED BY UTILITY)

ADVICE LETTER NO.

1

ISSUED BY

D. P. STEPHENSON

NAME

(TO BE INSERTED BY C.P.U.C.)

DATE FILED

MAY 13 2003

EFFECTIVE

JUN 12 2003

DECISION NO.

03-02-044

DIRECTOR - RATES & REVENUES

TITLE

RESOLUTION NO.

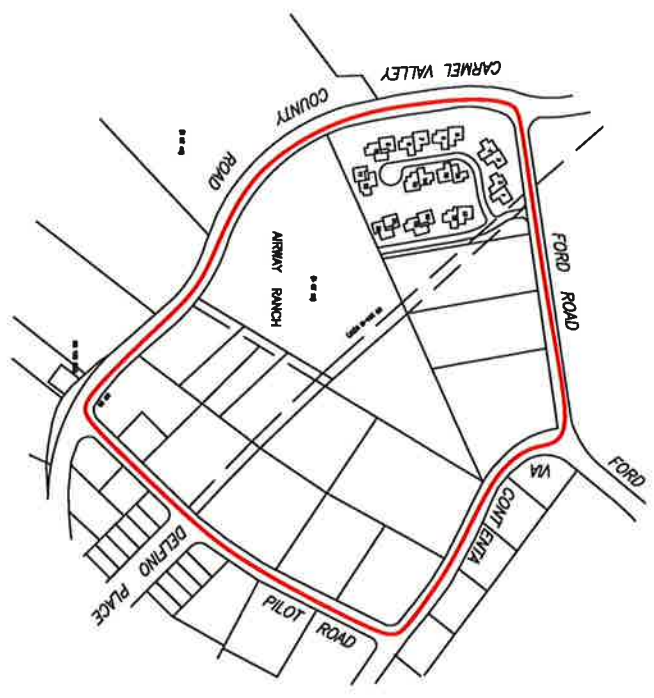
MONTEREY DIVISION
SEWER TERRITORY
STREET DETAIL MAP
ZONES 2 & 3
CARMEL VALLEY



- EXISTING SEWER TERRITORY
- ADDITION TO SEWER TERRITORY
- DELETION FROM SEWER TERRITORY
- SERVICE AREA BOUNDARY



Not To Scale
Revised: 6-3-03



Zone 2



Zone 3

CALIFORNIA-AMERICAN WATER COMPANY
303 H STREET, SUITE 250
CULA VISTA, CALIFORNIA 91910

Original C.P.U.C. SHEET NO. 9-S
C.P.U.C. SHEET NO.

SERVICE AREA MAP
Laguna Seca Ranch

(Attach a copy of the Service Area Map, approximately 7 x 8-3/4 inches in size, or folded to that size with not more than one fold so that it will fit within the borders of the space provided herein.)

The map should clearly indicate the boundaries of the service area, the principal streets and other main identifying features therein, and an indication of the general location of the service area in relation to nearby cities, highways or other well-known reference points.)

(TO BE INSERTED BY UTILITY)

ISSUED BY

(TO BE INSERTED BY C.P.U.C.)

ADVICE LETTER NO. 1

D. P. STEPHENSON
NAME

DATE FILED MAY 13 2003

DECISION NO. 03-02-044

DIRECTOR - RATES & REVENUES
TITLE

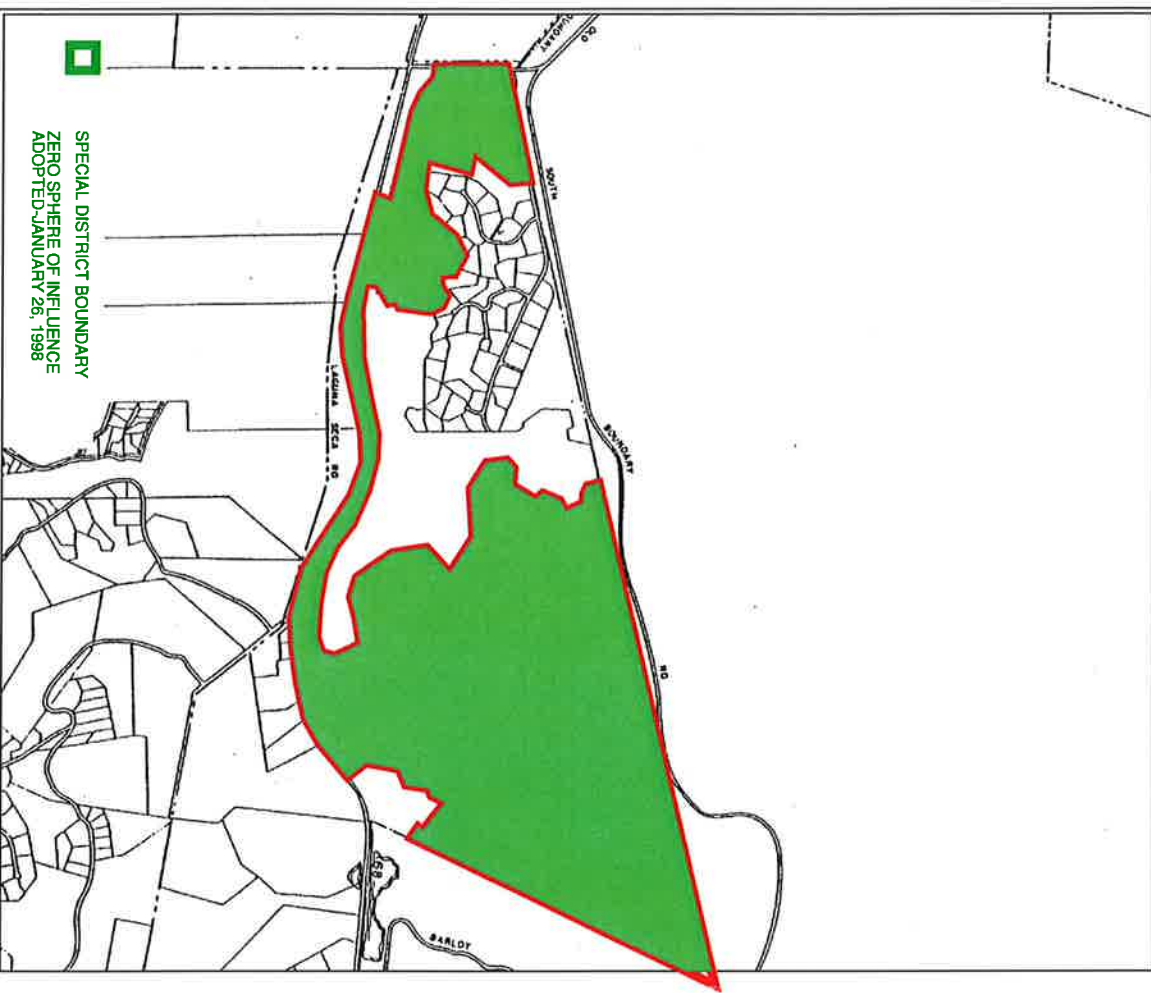
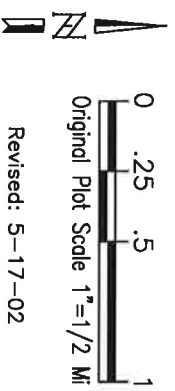
EFFECTIVE JUN 12 2003
RESOLUTION NO.

MONTEREY DIVISION
SEWER TERRITORY
DETAIL MAP 3

LAGUNA SECA
RANCH ESTATES



- EXISTING SEWER TERRITORY
- ADDITION TO SEWER TERRITORY
- DELETION FROM SEWER TERRITORY
- SERVICE AREA BOUNDARY

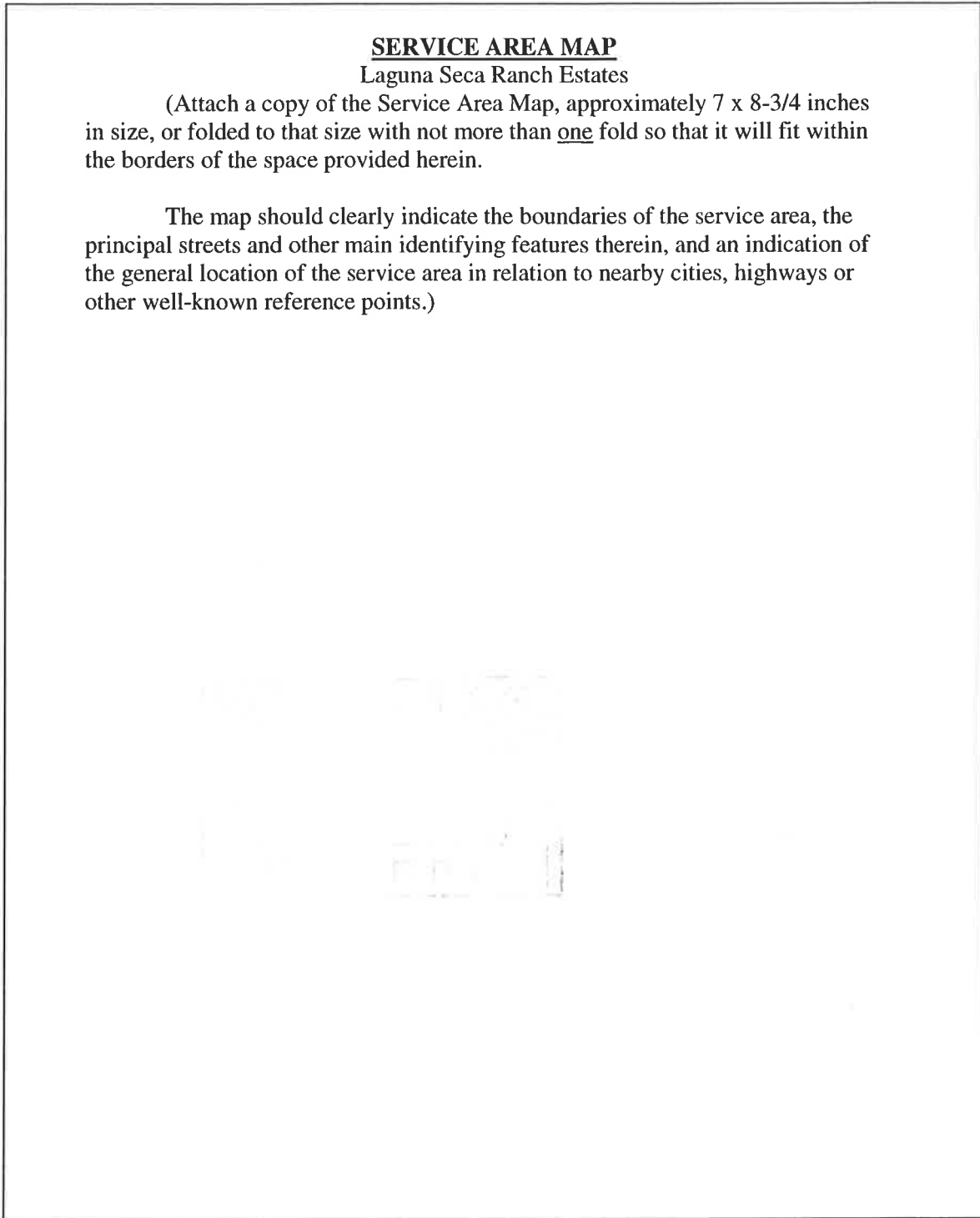


SERVICE AREA MAP

Laguna Seca Ranch Estates

(Attach a copy of the Service Area Map, approximately 7 x 8-3/4 inches in size, or folded to that size with not more than one fold so that it will fit within the borders of the space provided herein.

The map should clearly indicate the boundaries of the service area, the principal streets and other main identifying features therein, and an indication of the general location of the service area in relation to nearby cities, highways or other well-known reference points.)



(TO BE INSERTED BY UTILITY)

ISSUED BY

(TO BE INSERTED BY C.P.U.C.)

SERVICE LETTER NO. 1

D. P. STEPHENSON

DATE FILED MAY 13 2003

NAME

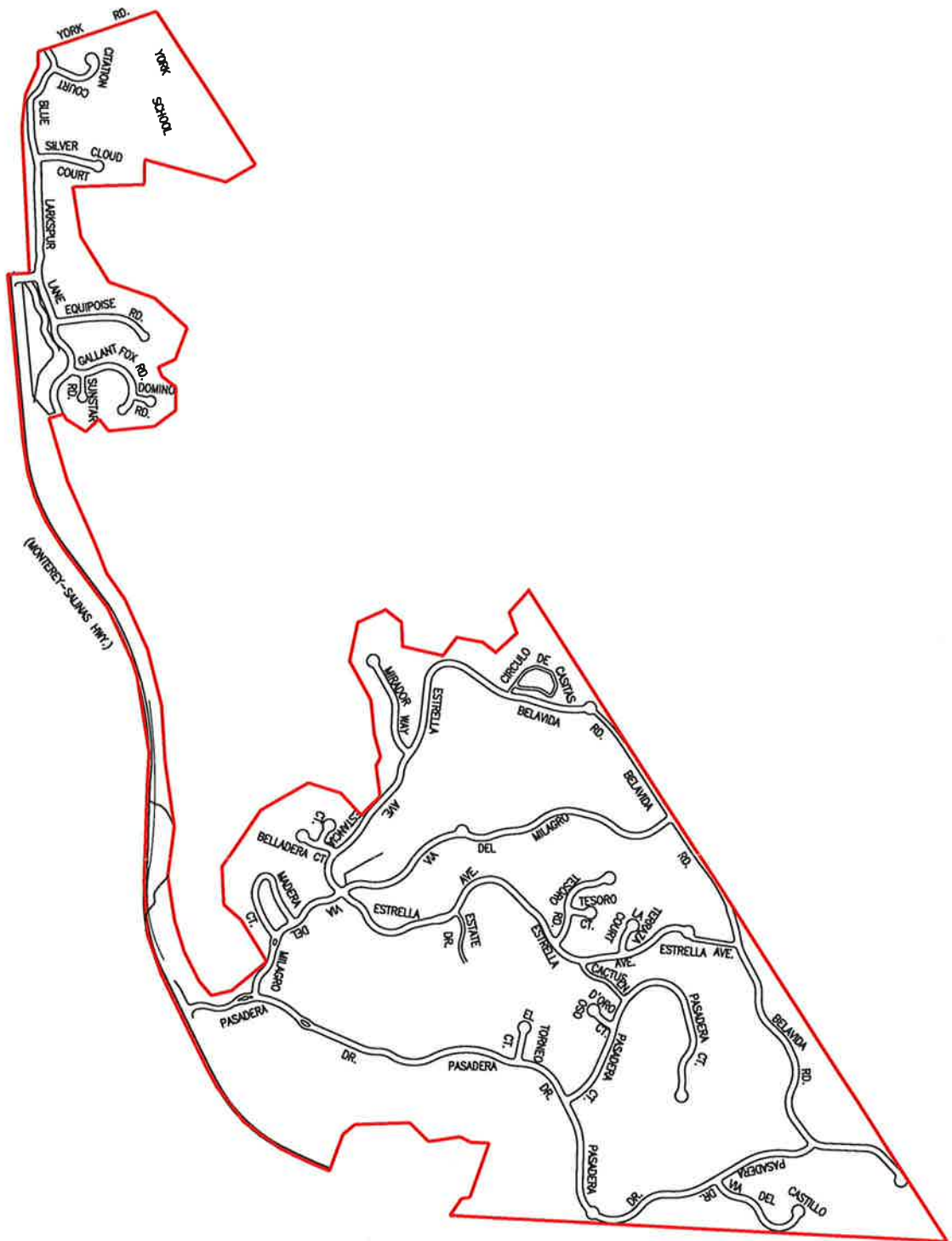
EFFECTIVE JUN 12 2003

DECISION NO. 03-02-044

DIRECTOR - RATES & REVENUES

RESOLUTION NO. _____

TITLE



MONTEREY DIVISION
SEWER TERRITORY
STREET DETAIL MAP

LAGUNA SECA
RANCH ESTATES

California-American
Water Company
Monterey Division
50 Regadale Dr., Monterey, CA 93940

- EXISTING SEWER TERRITORY
- ADDITION TO SEWER TERRITORY
- DELETION FROM SEWER TERRITORY
- SERVICE AREA BOUNDARY



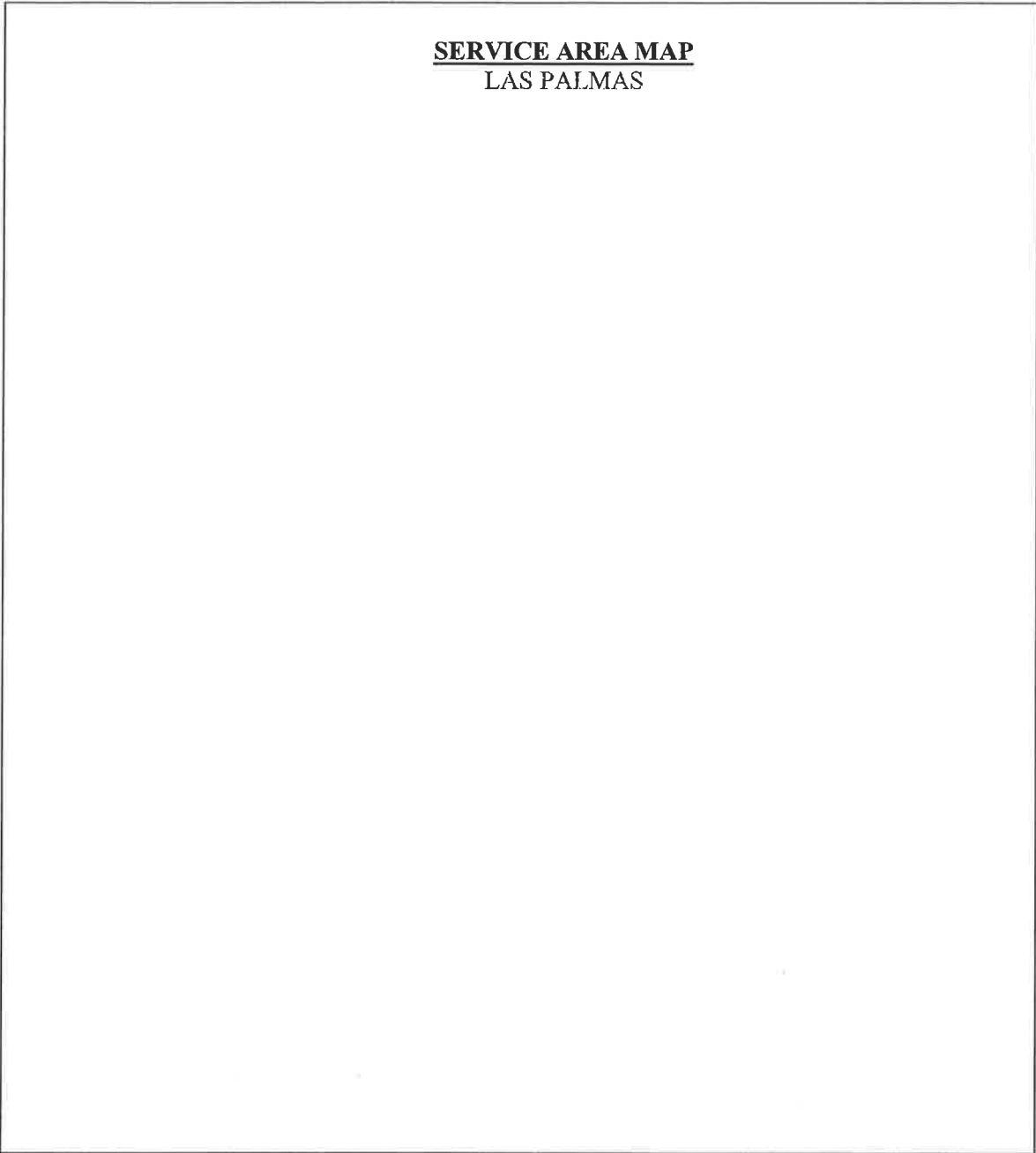
Not To Scale

Revised: 6-3-03

CALIFORNIA-AMERICAN WATER COMPANY
303 H STREET, SUITE 250
CHULA VISTA, CALIFORNIA 91910

Revised C.P.U.C. SHEET NO. 64-S

cancelling Original C.P.U.C. SHEET NO. 7-S



(TO BE INSERTED BY UTILITY)

ADVISE LETTER NO. 3-S

DECISION NO. 04-11-028

ISSUED BY

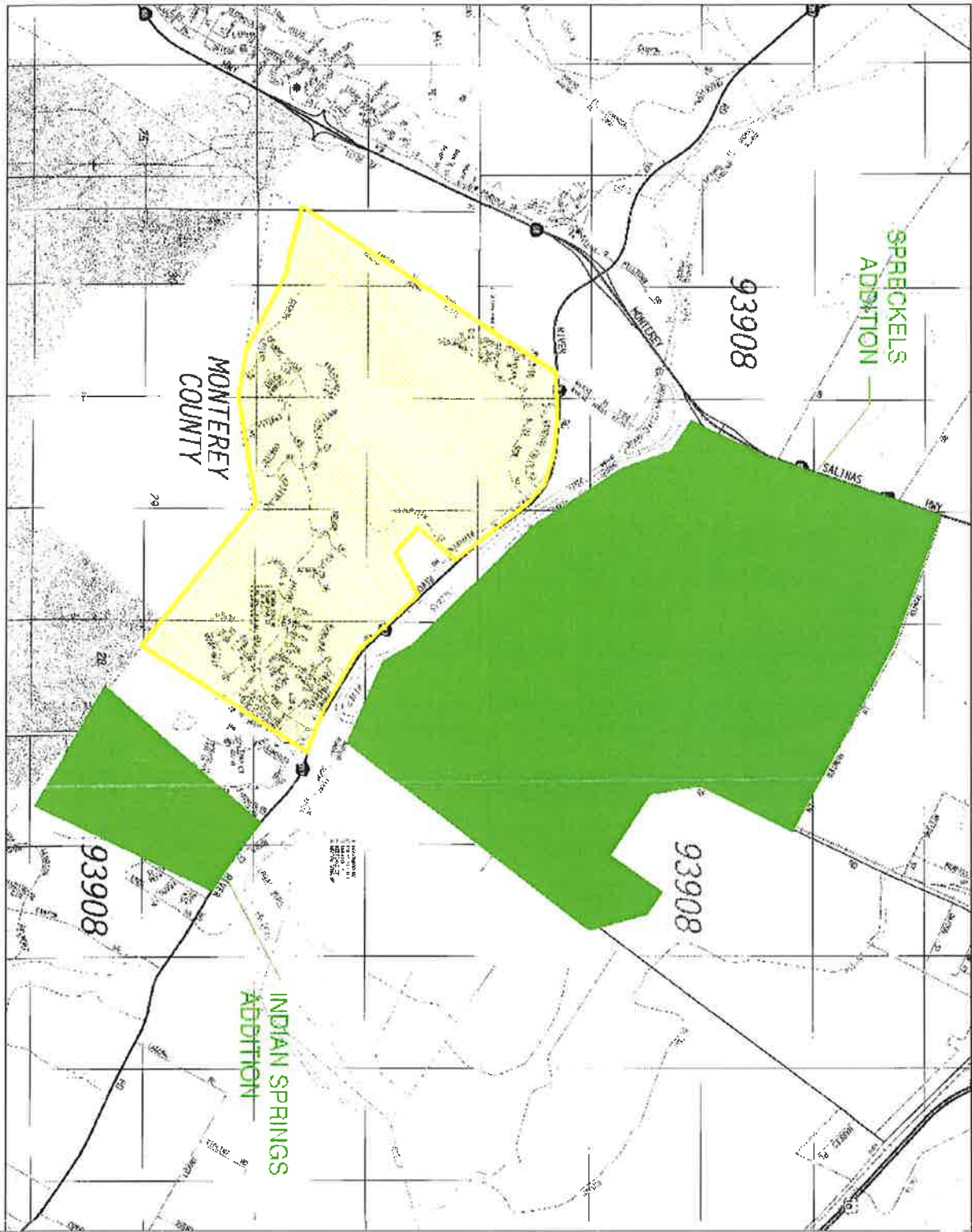
D. P. STEPHENSON
NAME

DIRECTOR - RATES & REVENUES
TITLE

(TO BE INSERTED BY C.P.U.C.)

DATE FILED MAY - 2 2005
EFFECTIVE JUN - 1 2005

RESOLUTION NO. _____

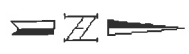


MONTEREY DIVISION
SEWER TERRITORY
DETAIL MAP 1

LAS PALMAS
SPRECKELS
INDIAN SPRINGS



- EXISTING SEWER TERRITORY
- ADDITION TO SEWER TERRITORY
- DELETION FROM SEWER TERRITORY
- SERVICE AREA BOUNDARY



Not to Scale

Revised: 4-26-05

CALIFORNIA-AMERICAN WATER COMPANY

303 H STREET, SUITE 250

CHULA VISTA, CALIFORNIA 91910

Revised

C.P.U.C. SHEET NO.

65-S

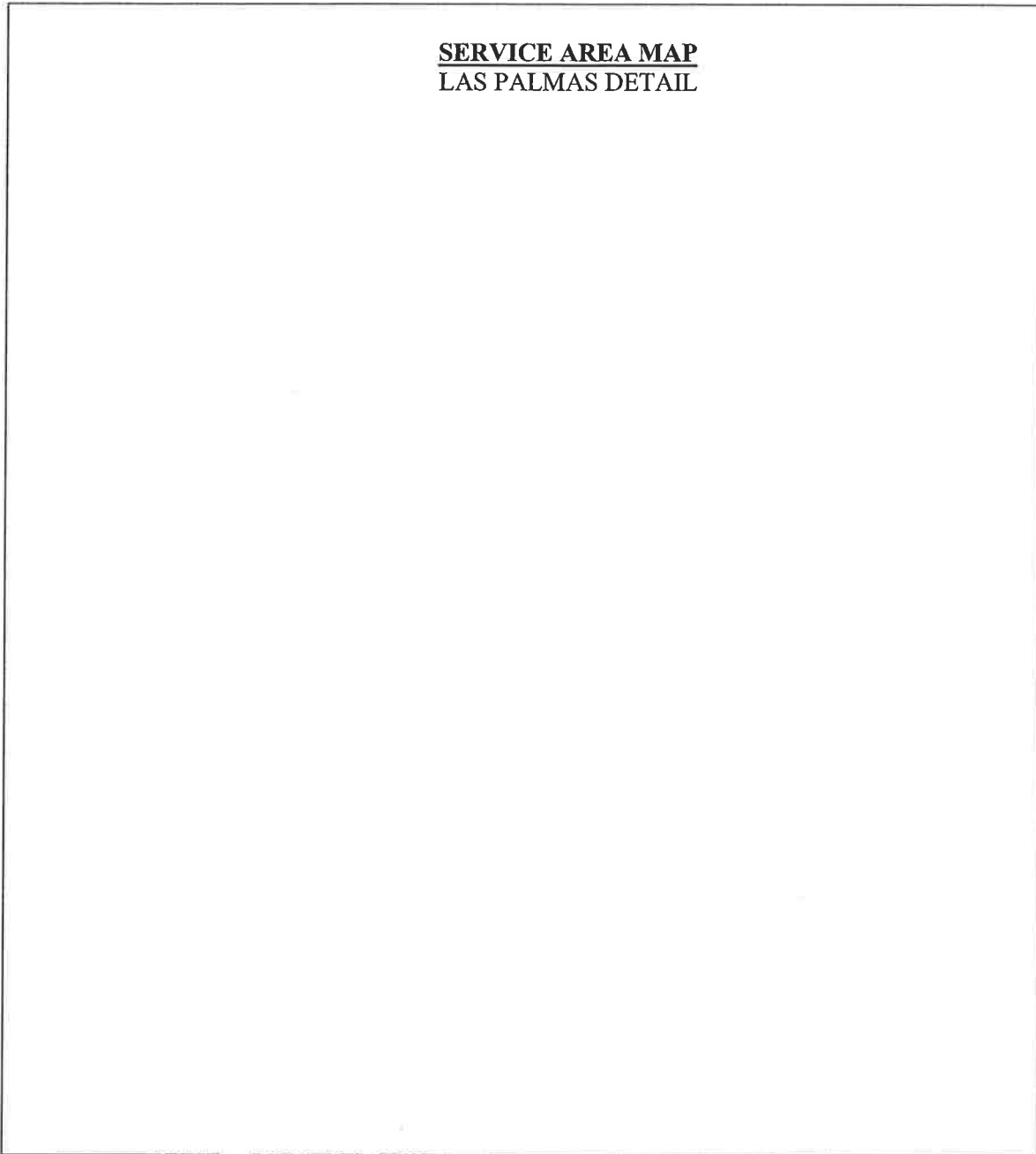
cancelling

Original

C.P.U.C. SHEET NO.

56-S

SERVICE AREA MAP
LAS PALMAS DETAIL



(TO BE INSERTED BY UTILITY)

SERVICE LETTER NO.

3-S

ISSUED BY

D. P. STEPHENSON

(TO BE INSERTED BY C.P.U.C.)

DATE FILED

MAY - 2 2005

NAME

EFFECTIVE

JUN - 1 2005

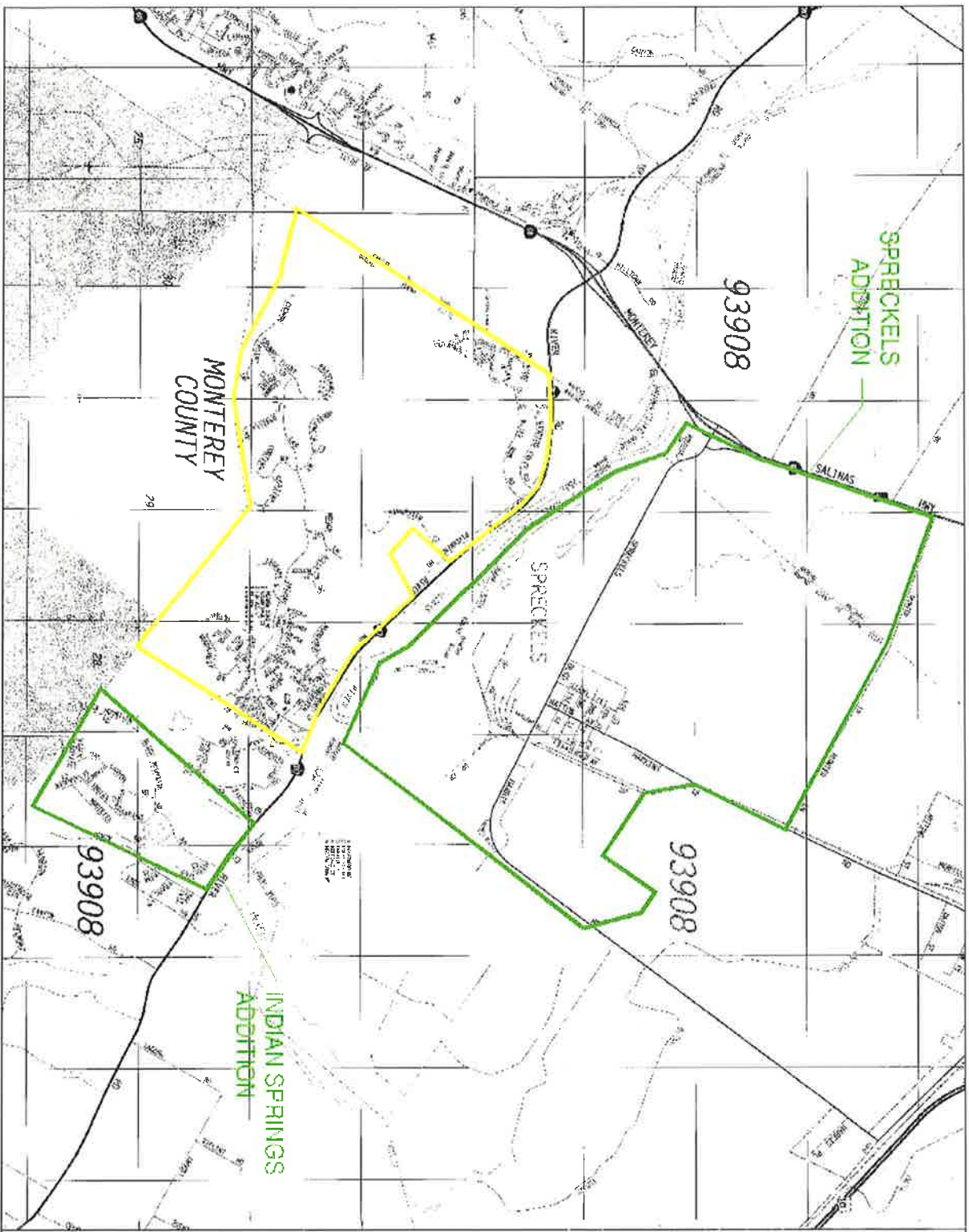
DECISION NO.

04-11-028

DIRECTOR - RATES & REVENUES

RESOLUTION NO.

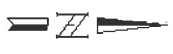
TITLE



MONTEREY DIVISION
SEWER TERRITORY
STREET DETAIL MAP
LAS PALMAS RANCH
MONTEREY COUNTY



- EXISTING SEWER TERRITORY
- ADDITION TO SEWER TERRITORY
- DELETION FROM SEWER TERRITORY
- SERVICE AREA BOUNDARY



Not To Scale

Revised: 4-26-05